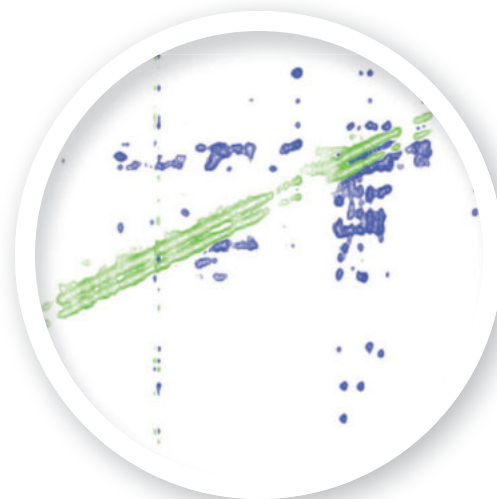




Coming Soon!

New Protein Standards



Immunoglobulin G-binding Protein G (GB1)

Formulation: 50 mM sodium phosphate (pH 5.5) in 10% D₂O and 0.02% NaN₃

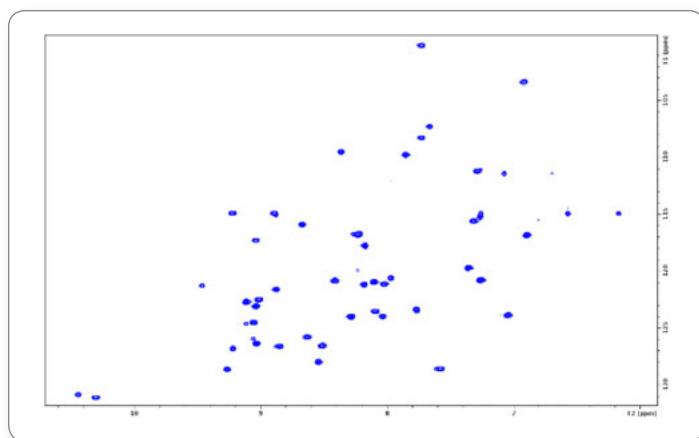
Number of residues: 56

MW (unlabeled): 6222 Da

Theoretical pI: 4.46

UniProt Accession: P06654

Catalog No.	Label
NEX-GB1-U	unlabeled
NEX-GB1-N	(¹⁵ N, 95%)
NEX-GB1-CN	(¹³ C, 5%; ¹⁵ N, 95%)
NEX-GB1-CN	(¹³ C, 95%; ¹⁵ N, 95%)
NEX-GB1-CDN	(¹³ C, 95%; D, 95%; ¹⁵ N, 95%)
NEX-GB1-ILV	(¹³ C, 95%; D, 95%; ¹⁵ N, 95%; ¹³ CH ₃ -ILV)
NEX-GB1-ILV FY	(¹³ C, 95%; D, 95%; ¹⁵ N, 95%; ¹³ CH ₃ -ILV FY)



Protein Sequence

MQYKLLINGKTLKGETTTEAVDAATAEKVKFQYANDNGVDGEWYDDATKFTVTE

Calbindin-D9k (Protein S100-G)

Formulation: 50 mM ammonium acetate (pH 6.0) in 10% D₂O and 0.02% NaN₃

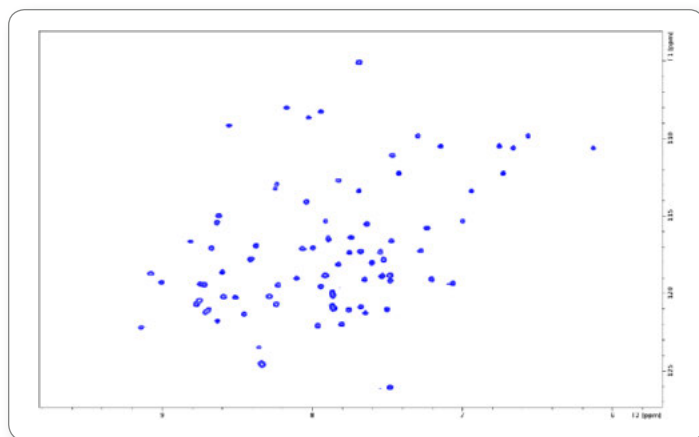
Number of residues: 76

MW (unlabeled): 8631 Da

Theoretical pI: 4.53

UniProt Accession: P02633

Catalog No.	Label
NEX-CAL-U	unlabeled
NEX-CAL-N	(¹⁵ N, 95%)
NEX-CAL-CN	(¹³ C, 5%; ¹⁵ N, 95%)
NEX-CAL-CN	(¹³ C, 95%; ¹⁵ N, 95%)
NEX-CAL-CDN	(¹³ C, 95%; D, 95%; ¹⁵ N, 95%)
NEX-CAL-ILV	(¹³ C, 95%; D, 95%; ¹⁵ N, 95%; ¹³ CH ₃ -ILV)
NEX-CAL-ILV FY	(¹³ C, 95%; D, 95%; ¹⁵ N, 95%; ¹³ CH ₃ -ILV FY)



Protein Sequence

MKSPEELKGFIFEKYAAKEGDPNQLSKEELKLLLTQTEFPLLKGPSTLDELFEELDKNGDGEVSEEFEEQVLVKKISQ

Continued >

Alpha-Spectrin SH3 Domain

Formulation: 10 mM sodium citrate (pH 3.5) in 10% D₂O and 0.02% NaN₃

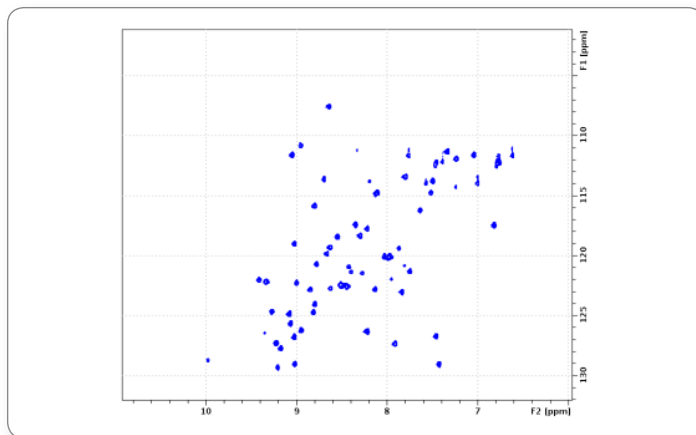
Number of residues: 71

MW (unlabeled): 8397 Da

Theoretical pI: 6.64

UniProt Accession: P07751

Catalog No.	Label
NEX-SH3-U	unlabeled
NEX-SH3-N	(¹⁵ N, 95%)
NEX-SH3-CN	(¹³ C, 5%; ¹⁵ N, 95%)
NEX-SH3-CN	(¹³ C, 95%; ¹⁵ N, 95%)
NEX-SH3-CDN	(¹³ C, 95%; D, 95%; ¹⁵ N, 95%)
NEX-SH3-ILV	(¹³ C, 95%; D, 95%; ¹⁵ N, 95%; ¹³ CH ₃ -ILV)
NEX-SH3-ILV FY	(¹³ C, 95%; D, 95%; ¹⁵ N, 95%; ¹³ CH ₃ -ILV FY)



Protein Sequence

MGHHHHHSHMDETGKELVLALYDYQEKSPREVTMKKGDILTLNSTNKDWWKVEVNDRQF
VPAAYVKKLD

Research products are distributed and sold worldwide via our extensive network.

To request a quotation or place an order:

North America: 1.978.749.8000 | 1.800.322.1174 | cilsales@isotope.com

International: +1.978.749.8000 | intlsales@isotope.com

Fax: 1.978.749.2768 | isotope.com

CIL's distributor listing is available at isotope.com.

